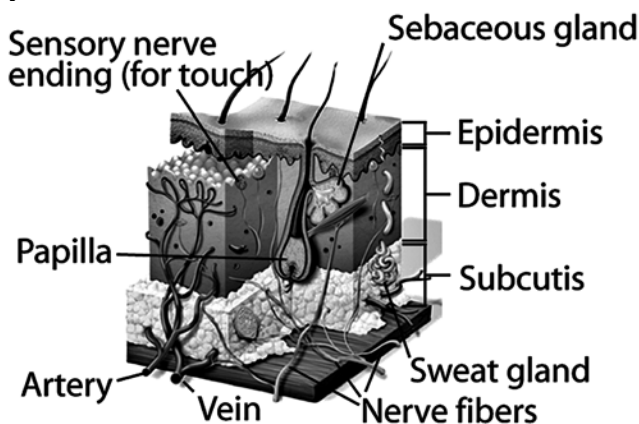


11420-11426

CPT® Codes

11420	Excision, benign lesion including margins, except skin tag (unless listed elsewhere), scalp, neck, hands, feet, genitalia; excised diameter 0.5 cm or less
11421	excised diameter 0.6 to 1.0 cm
11422	excised diameter 1.1 to 2.0 cm
11423	excised diameter 2.1 to 3.0 cm
11424	excised diameter 3.1 to 4.0 cm
11426	excised diameter over 4.0 cm

Layers of the skin



CPT® Coding Tips

When patient's condition indicates, carefully document records to avoid inappropriate denial as cosmetic surgery.

In 2003, CPT® code descriptions were revised to clarify "excised diameter" (rather than just the lesion diameter) and to "include margins." These distinctions are important as they will impact code selection and reimbursement. For excision of malignant lesions, see codes 11620-11626.

ICD-9-CM Codes

078.0	Molluscum contagiosum
078.10	Viral warts, unspecified
078.11	Condyloma acuminatum
078.19	Other specified viral warts
214.1	Lipoma of other skin and subcutaneous tissue
216.4	Benign neoplasm of; scalp and skin of neck
216.6	skin of upper limb, including shoulder
216.7	skin of lower limb, including hip
216.8	other specified sites of skin
221.1	vagina
221.2	ulva
221.8	other specified sites of female genital organs
222.1	penis
222.4	scrotum
228.01	Hemangioma of skin and subcutaneous tissue
448.1	Nevus, non-neoplastic
607.0	Leukoplakia; of penis
623.1	of vagina
623.6	Vaginal hematoma
623.7	Polyp of vagina
624.09	Other dystrophy of vulva
624.6	Polyp of labia and vulva

686.1	Pyogenic granuloma
700	Corns and callosities
701.1	Keratoderma, acquired
701.4	Keloid scar
701.5	Other abnormal granulation tissue
701.8	Other specified hypertrophic and atrophic conditions of skin
702.0	Actinic keratosis
702.11	Inflamed seborrheic keratosis
702.19	Other seborrheic keratosis
702.8	Other specified dermatoses
706.2	Sebaceous cyst
709.1	Vascular disorders of skin
709.2	Skin conditions and fibrosis of skin
709.4	Foreign body granuloma of skin and subcutaneous tissue
709.8	Other specified disorders of skin
752.41	Embryonic cyst of cervix, vagina, and external female genitalia
757.32	Congenital vascular hamartomas
757.39	Other specified congenital anomalies of skin
782.2	Localized superficial swelling, mass, or lump

CCI Edits

11420	00400 ⁰ , 10060 ^{1M} , 10061 ^{1M} , 11100 ¹ , 11719 ¹ , 11900 ¹ , 11901 ¹ , 12001 ¹ , 12002 ¹ , 12004 ¹ , 12005 ¹ , 12006 ¹ , 12007 ¹ , 12011 ¹ , 12013 ¹ , 12014 ¹ , 12015 ¹ , 12016 ¹ , 12017 ¹ , 12018 ¹ , 12019 ¹ , 12021 ¹ , 12031 ¹ , 12032 ¹ , 12034 ¹ , 12035 ¹ , 12036 ¹ , 12037 ¹ , 12041 ¹ , 12042 ¹ , 12044 ¹ , 12045 ¹ , 12046 ¹ , 12047 ¹ , 12051 ¹ , 12052 ¹ , 12053 ¹ , 12054 ¹ , 12055 ¹ , 12056 ¹ , 12057 ¹ , 13100 ¹ , 13101 ¹ , 13102 ¹ , 13120 ¹ , 13121 ¹ , 13122 ¹ , 13131 ¹ , 13132 ¹ , 13133 ¹ , 13150 ¹ , 13151 ¹ , 13152 ¹ , 13153 ¹ , 17250 ¹ , 36000 ¹ , 36410 ¹ , 37202 ¹ , 51701 ¹ , 51702 ¹ , 51703 ¹ , 62318 ¹ , 62319 ¹ , 64415 ¹ , 64416 ¹ , 64417 ¹ , 64450 ¹ , 64470 ¹ , 64475 ¹ , 69990 ⁰ , 90760 ¹ , 90765 ¹ , 90772 ¹ , 90774 ¹ , 90775 ¹ , 96405 ¹ , 96406 ¹ , G0168 ¹ , J2001 ¹
11421	00400 ⁰ , 10061 ^{1M} , 11100 ¹ , 11719 ¹ , 11900 ¹ , 11901 ¹ , 12001 ¹ , 12002 ¹ , 12004 ¹ , 12005 ¹ , 12006 ¹ , 12007 ¹ , 12011 ¹ , 12013 ¹ , 12014 ¹ , 12015 ¹ , 12016 ¹ , 12017 ¹ , 12018 ¹ , 17250 ¹ , 36000 ¹ , 36410 ¹ , 37202 ¹ , 51701 ¹ , 51702 ¹ , 51703 ¹ , 62318 ¹ , 62319 ¹ , 64415 ¹ , 64416 ¹ , 64417 ¹ , 64450 ¹ , 64470 ¹ , 64475 ¹ , 69990 ⁰ , 90760 ¹ , 90765 ¹ , 90772 ¹ , 90774 ¹ , 90775 ¹ , 96405 ¹ , 96406 ¹ , G0168 ¹ , J2001 ¹
11422	00400 ⁰ , 10061 ^{1M} , 11100 ¹ , 11900 ¹ , 11901 ¹ , 12001 ¹ , 12002 ¹ , 12004 ¹ , 12005 ¹ , 12006 ¹ , 12007 ¹ , 12011 ¹ , 12013 ¹ , 12014 ¹ , 12015 ¹ , 12016 ¹ , 12017 ¹ , 12018 ¹ , 17250 ¹ , 36000 ¹ , 36410 ¹ , 37202 ¹ , 51701 ¹ , 51702 ¹ , 51703 ¹ , 62318 ¹ , 62319 ¹ , 64415 ¹ , 64416 ¹ , 64417 ¹ , 64450 ¹ , 64470 ¹ , 64475 ¹ , 69990 ⁰ , 90760 ¹ , 90765 ¹ , 90772 ¹ , 90774 ¹ , 90775 ¹ , 96405 ¹ , 96406 ¹ , G0168 ¹ , J2001 ¹
11423	00400 ⁰ , 10061 ^{1M} , 11100 ¹ , 11900 ¹ , 11901 ¹ , 12001 ¹ , 12002 ¹ , 12004 ¹ , 12005 ¹ , 12006 ¹ , 12007 ¹ , 12011 ¹ , 12013 ¹ , 12014 ¹ , 12015 ¹ , 12016 ¹ , 12017 ¹ , 12018 ¹ , 17250 ¹ , 36000 ¹ , 36410 ¹ , 37202 ¹ , 51701 ¹ , 51702 ¹ , 51703 ¹ , 62318 ¹ , 62319 ¹ , 64415 ¹ , 64416 ¹ , 64417 ¹ , 64450 ¹ , 64470 ¹ , 64475 ¹ , 69990 ⁰ , 90760 ¹ , 90765 ¹ , 90772 ¹ , 90774 ¹ , 90775 ¹ , 96405 ¹ , 96406 ¹ , G0168 ¹ , J2001 ¹
11424	00400 ⁰ , 11100 ¹ , 11900 ¹ , 11901 ¹ , 12001 ¹ , 12002 ¹ , 12004 ¹ , 12005 ¹ , 12006 ¹ , 12007 ¹ , 12011 ¹ , 12013 ¹ , 12014 ¹ , 12015 ¹ , 12016 ¹ , 12017 ¹ , 12018 ¹ , 17250 ¹ , 36000 ¹ , 36410 ¹ , 37202 ¹ , 51701 ¹ , 51702 ¹ , 51703 ¹ , 62318 ¹ , 62319 ¹ , 64415 ¹ , 64416 ¹ , 64417 ¹ , 64450 ¹ , 64470 ¹ , 64475 ¹ , 69990 ⁰ , 90760 ¹ , 90765 ¹ , 90772 ¹ , 90774 ¹ , 90775 ¹ , 96405 ¹ , 96406 ¹ , G0168 ¹ , J2001 ¹
11426	00400 ⁰ , 11100 ¹ , 11900 ¹ , 11901 ¹ , 12001 ¹ , 12002 ¹ , 12004 ¹ , 12005 ¹ , 12006 ¹ , 12007 ¹ , 12011 ¹ , 12013 ¹ , 12014 ¹ , 12015 ¹ , 12016 ¹ , 12017 ¹ , 12018 ¹ , 17250 ¹ , 36000 ¹ , 36410 ¹ , 37202 ¹ , 51701 ¹ , 51702 ¹ , 51703 ¹ , 62318 ¹ , 62319 ¹ , 64415 ¹ , 64416 ¹ , 64417 ¹ , 64450 ¹ , 64470 ¹ , 64475 ¹ , 69990 ⁰ , 90760 ¹ , 90765 ¹ , 90772 ¹ , 90774 ¹ , 90775 ¹ , 96405 ¹ , 96406 ¹ , G0168 ¹ , J2001 ¹

Medicare Coverage, RVU and Modifier Data

	Status	Fac RVU	N-Fac RVU	Global Days	Mod -50	Mod -51	Mod -80
11420	A	2.02	2.88	10	0	2	1
11421	A	2.70	3.71	10	0	2	1
11422	A	3.24	4.15	10	0	2	1
11423	A	3.78	4.85	10	0	2	1
11424	A	4.38	5.59	10	0	2	1
11426	A	6.68	8.01	10	0	2	1

Medicare Manuals: BP 15, 260; CP 4, 20.5; CP 12, 30, CP 12, 40; CP 12, 90.3; CP 14, 10

11620-11626

CPT® Codes

11620	Excision, malignant lesion including margins, scalp, neck, hands, feet, genitalia; excised diameter 0.5 cm or less
11621	excised diameter 0.6 to 1.0 cm
11622	excised diameter 1.1 to 2.0 cm
11623	excised diameter 2.1 to 3.0 cm
11624	excised diameter 3.1 to 4.0 cm
11626	excised diameter over 4.0 cm

CPT® Coding Tips

When patient's condition indicates, carefully document records to avoid inappropriate denial as cosmetic surgery.

In 2003, CPT® code descriptions were revised to clarify "excised diameter" (rather than just the lesion diameter) and to "include margins." These distinctions are important as they will impact code selection and reimbursement. For excision of malignant lesions, see codes 11620-11626.

ICD-9-CM Codes

172.4	Malignant neoplasm of skin of; upper limb, including shoulder
172.6	scalp and neck
172.7	lower limb, including hip
172.8	other specified sites of skin
173.4	Other malignant neoplasm of; scalp and skin of neck
173.6	skin of upper limb, including shoulder
173.7	skin of lower limb, including hip
184.0	Malignant neoplasm of; vagina
184.1	labia majora
184.2	labia minora
184.3	clitoris
184.4	vulva, unspecified
184.8	other specified sites of female genital organs
187.1	prepuce
187.4	penis, part unspecified
187.7	scrotum
198.2	Secondary malignant neoplasm of; skin
198.82	genital organs
232.4	Carcinoma in situ of; scalp and skin of neck
232.6	skin of upper limb, including shoulder
232.7	skin of lower limb, including hip
232.8	other specified sites of skin
233.31	vagina
233.32	vulva
233.33	other female genital organ
233.5	penis

233.6 other and unspecified male genital organs

624.01 Vulvar intraepithelial neoplasia; I [VIN I]

624.02 II [VIN II]

CCI Edits

11620	00400 ⁰ , 100611 ^M , 11100 ¹ , 11900 ¹ , 11901 ¹ , 12001 ¹ , 12002 ¹ , 12004 ¹ , 12005 ¹ , 12006 ¹ , 12007 ¹ , 12011 ¹ , 12013 ¹ , 12014 ¹ , 12015 ¹ , 12016 ¹ , 12017 ¹ , 12018 ¹ , 17250 ¹ , 172621 ^M , 172631 ^M , 172641 ^M , 172661 ^M , 172711 ^M , 172721 ^M , 172731 ^M , 172741 ^M , 172761 ^M , 172811 ^M , 172821 ^M , 172831 ^M , 172841 ^M , 172861 ^M , 36000 ¹ , 36410 ¹ , 37202 ¹ , 51701 ¹ , 51702 ¹ , 51703 ¹ , 62318 ¹ , 62319 ¹ , 64415 ¹ , 64416 ¹ , 64417 ¹ , 64450 ¹ , 64470 ¹ , 64475 ¹ , 69990 ⁰ , 90760 ¹ , 90765 ¹ , 90772 ¹ , 90774 ¹ , 90775 ¹ , G0168 ¹ , J2001 ¹
11621	00400 ⁰ , 100611 ^M , 11100 ¹ , 11900 ¹ , 11901 ¹ , 12001 ¹ , 12002 ¹ , 12004 ¹ , 12005 ¹ , 12006 ¹ , 12007 ¹ , 12011 ¹ , 12013 ¹ , 12014 ¹ , 12015 ¹ , 12016 ¹ , 12017 ¹ , 12018 ¹ , 17250 ¹ , 172661 ^M , 172731 ^M , 172741 ^M , 172761 ^M , 172821 ^M , 172831 ^M , 172841 ^M , 172861 ^M , 36000 ¹ , 36410 ¹ , 37202 ¹ , 51701 ¹ , 51702 ¹ , 51703 ¹ , 62318 ¹ , 62319 ¹ , 64415 ¹ , 64416 ¹ , 64417 ¹ , 64450 ¹ , 64470 ¹ , 64475 ¹ , 69990 ⁰ , 90760 ¹ , 90765 ¹ , 90772 ¹ , 90774 ¹ , 90775 ¹ , G0168 ¹ , J2001 ¹
11622	00400 ⁰ , 100611 ^M , 11100 ¹ , 11900 ¹ , 11901 ¹ , 12001 ¹ , 12002 ¹ , 12004 ¹ , 12005 ¹ , 12006 ¹ , 12007 ¹ , 12011 ¹ , 12013 ¹ , 12014 ¹ , 12015 ¹ , 12016 ¹ , 12017 ¹ , 12018 ¹ , 17250 ¹ , 172741 ^M , 172761 ^M , 172831 ^M , 172841 ^M , 172861 ^M , 36000 ¹ , 36410 ¹ , 37202 ¹ , 51701 ¹ , 51702 ¹ , 51703 ¹ , 62318 ¹ , 62319 ¹ , 64415 ¹ , 64416 ¹ , 64417 ¹ , 64450 ¹ , 64470 ¹ , 64475 ¹ , 69990 ⁰ , 90760 ¹ , 90765 ¹ , 90772 ¹ , 90774 ¹ , 90775 ¹ , G0168 ¹ , J2001 ¹
11623	00400 ⁰ , 11100 ¹ , 11900 ¹ , 11901 ¹ , 12001 ¹ , 12002 ¹ , 12004 ¹ , 12005 ¹ , 12006 ¹ , 12007 ¹ , 12011 ¹ , 12013 ¹ , 12014 ¹ , 12015 ¹ , 12016 ¹ , 12017 ¹ , 12018 ¹ , 17250 ¹ , 172761 ^M , 172841 ^M , 172861 ^M , 36000 ¹ , 36410 ¹ , 37202 ¹ , 51701 ¹ , 51702 ¹ , 51703 ¹ , 62318 ¹ , 62319 ¹ , 64415 ¹ , 64416 ¹ , 64417 ¹ , 64450 ¹ , 64470 ¹ , 64475 ¹ , 69990 ⁰ , 90760 ¹ , 90765 ¹ , 90772 ¹ , 90774 ¹ , 90775 ¹ , G0168 ¹ , J2001 ¹
11624	00400 ⁰ , 11100 ¹ , 11900 ¹ , 11901 ¹ , 12001 ¹ , 12002 ¹ , 12004 ¹ , 12005 ¹ , 12006 ¹ , 12007 ¹ , 12011 ¹ , 12013 ¹ , 12014 ¹ , 12015 ¹ , 12016 ¹ , 12017 ¹ , 12018 ¹ , 17250 ¹ , 172861 ^M , 36000 ¹ , 36410 ¹ , 37202 ¹ , 51701 ¹ , 51702 ¹ , 51703 ¹ , 62318 ¹ , 62319 ¹ , 64415 ¹ , 64416 ¹ , 64417 ¹ , 64450 ¹ , 64470 ¹ , 64475 ¹ , 69990 ⁰ , 90760 ¹ , 90765 ¹ , 90772 ¹ , 90774 ¹ , 90775 ¹ , G0168 ¹ , J2001 ¹
11626	00400 ⁰ , 11100 ¹ , 11900 ¹ , 11901 ¹ , 12001 ¹ , 12002 ¹ , 12004 ¹ , 12005 ¹ , 12006 ¹ , 12007 ¹ , 12011 ¹ , 12013 ¹ , 12014 ¹ , 12015 ¹ , 12016 ¹ , 12017 ¹ , 12018 ¹ , 150021 ^M , 17250 ¹ , 172861 ^M , 36000 ¹ , 36410 ¹ , 37202 ¹ , 51701 ¹ , 51702 ¹ , 51703 ¹ , 62318 ¹ , 62319 ¹ , 64415 ¹ , 64416 ¹ , 64417 ¹ , 64450 ¹ , 64470 ¹ , 64475 ¹ , 69990 ⁰ , 90760 ¹ , 90765 ¹ , 90772 ¹ , 90774 ¹ , 90775 ¹ , G0168 ¹ , J2001 ¹

Medicare Coverage, RVU and Modifier Data

	Status	Fac RVU	N-Fac RVU	Global Days	Mod -50	Mod -51	Mod -80
11620	A	2.75	4.40	10	0	2	1
11621	A	3.54	5.25	10	0	2	1
11622	A	4.07	5.93	10	0	2	1
11623	A	5.02	6.98	10	0	2	1
11624	A	5.77	7.92	10	0	2	1
11626	A	7.37	9.80	10	0	2	1

Medicare Manuals: BP 15, 260; CP 4, 20.5; CP 12, 30, CP 12, 40; CP 12, 90.3; CP 14, 10