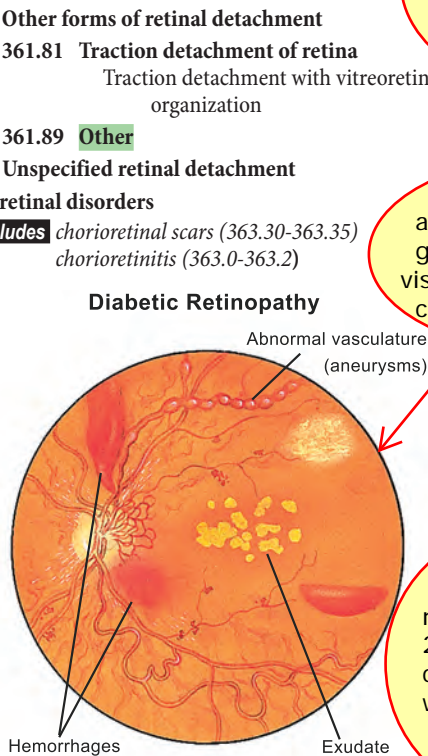


**5<sup>th</sup>** 361.3 Retinal defects without detachment  
**Excludes** chorioretinal scars after surgery for detachment (363.30-363.35)  
 peripheral retinal degeneration without defect (362.60-362.66)

**5<sup>th</sup>** 361.8 Other forms of retinal detachment  
 361.81 Traction detachment of retina  
 Traction detachment with vitreoretinal organization  
 361.89 Other  
 361.9 Unspecified retinal detachment

**4<sup>th</sup>** 362 Other retinal disorders  
**Excludes** chorioretinal scars (363.30-363.35)  
 chorioretinitis (363.0-363.2)

**Diabetic Retinopathy**



**5<sup>th</sup>** 362.0 Diabetic retinopathy  
 Code first diabetes (250.5)

362.01 Background diabetic retinopathy 18, 19, 117, 119  
 Diabetic retinal microaneurysms  
 Diabetic retinopathy NOS

362.02 Proliferative diabetic retinopathy 18, 19, 117, 119

362.03 Nonproliferative diabetic retinopathy NOS 18, 19, 117, 119

362.04 Mild nonproliferative diabetic retinopathy 18, 19, 117, 119

362.05 Moderate nonproliferative diabetic retinopathy 18, 19, 117, 119

362.06 Severe nonproliferative diabetic retinopathy 18, 19, 117, 119

362.07 Diabetic macular edema 117, 119  
 Diabetic retinal edema

**Note:** Code 362.07 must be used with a code for diabetic retinopathy (362.01-362.06)

**5<sup>th</sup>** 362.1 Other background retinopathy and retinal vascular changes

362.10 Background retinopathy, unspecified

**362.11 Hypertensive retinopathy**  
**ICD-9-CM Official Guidelines (Chapter 7a):**

**6) Hypertensive Retinopathy**  
 Two codes are necessary to identify the condition. First assign the code from subcategory 362.11, Hypertensive retinopathy, then the appropriate code from categories 401-405 to indicate the type of hypertension.

**362.12 Exudative retinopathy**  
 Coats' syndrome

**362.13 Changes in vascular appearance**  
 Vascular sheathing of retina  
 Use additional code for any associated atherosclerosis (440.8)

**362.14 Retinal microaneurysms NOS**

**362.15 Retinal telangiectasia**

**362.16 Retinal neovascularization NOS**  
 Neovascularization:  
 choroidal  
 subretinal

**362.17 Other intraretinal microvascular abnormalities**  
 Retinal varices

**362.18 Retinal vasculitis**  
 Eales' disease  
 Retinal:  
 arteritis  
 endarteritis  
 perivasculitis  
 phlebitis

**5<sup>th</sup>** 362.2 Other proliferative retinopathy

362.20 Retinopathy of prematurity, unspecified

362.21 Retrolental fibroplasia

362.22 Retinopathy of prematurity, stage 0

362.23 Retinopathy of prematurity, stage 1

362.24 Retinopathy of prematurity, stage 2

362.25 Retinopathy of prematurity, stage 3

362.26 Retinopathy of prematurity, stage 4

362.27 Retinopathy of prematurity, stage 5

362.29 Other nondiabetic proliferative retinopathy

**5<sup>th</sup>** 362.3 Retinal vascular occlusion

362.30 Retinal vascular occlusion, unspecified

362.31 Central retinal artery occlusion

362.32 Arterial branch occlusion

362.33 Partial arterial occlusion  
 Hollenhorst plaque  
 Retinal microembolism

362.34 Transient arterial occlusion  
 Amaurosis fugax

362.35 Central retinal vein occlusion

362.36 Venous branch occlusion

362.37 Venous branch occlusion, partial

362.38 Occlusion of retinal vein  
 incipient of retinal vein occlusion  
 partial of retinal vein

362.39 Occlusion of retinal artery  
 incipient of retinal artery occlusion  
 partial of retinal artery

362.40 Occlusion of retinal artery  
 incipient of retinal artery occlusion  
 partial of retinal artery

362.41 Central serous retinopathy

362.42 Serous retinal detachment (serous) (361.2)

362.43 Rhegmatogenous retinal detachment (361.00-361.07)

362.44 Retinal layer separation, unspecified

362.45 Central serous retinopathy

362.46 Serous retinal detachment (serous) (361.2)

362.47 Rhegmatogenous retinal detachment (361.00-361.07)

362.48 Retinal layer separation, unspecified

362.49 Central serous retinopathy

362.50 Serous retinal detachment (serous) (361.2)

362.51 Rhegmatogenous retinal detachment (361.00-361.07)

362.52 Retinal layer separation, unspecified

362.53 Central serous retinopathy

362.54 Serous retinal detachment (serous) (361.2)

362.55 Rhegmatogenous retinal detachment (361.00-361.07)

362.56 Retinal layer separation, unspecified

Code ranges at the top and in the page tabs for more efficient referencing.

Official ICD-9-CM Guidelines incorporated inline with the relevant codes for correct coding guidance directly from CMS and the CDC.

Full-color, detailed anatomical illustrations give the coder or biller visual cues that facilitate correct code selection.

Intuitive symbols denote new and revised 2009 ICD-9-CM codes as well as when additional digits are required.

Unobtrusive color bars highlight "other specified," "unspecified," and "manifestation" diagnosis codes that may require manual claims submission with additional documentation or the use of multiple codes.

Codes required for reporting under Medicare's PQRI pay-for-performance measure are labeled with the appropriate measures.

Symbols and color bars key located at the bottom of every spread.

361.3 – 362.42

- 362.43 Hemorrhagic detachment of retinal pigment epithelium
- 5<sup>th</sup> 362.5 Degeneration of macula and posterior pole  
**Excludes** degeneration of optic disc (377.21-377.24)  
 hereditary retinal degeneration [dystrophy] (362.70-362.77)
- 362.50 Macular degeneration (senile), unspecified I 4
- 362.51 Nonexudative senile macular degeneration I 4  
 Senile macular degeneration:  
 atrophic  
 dry
- 362.52 Exudative senile macular degeneration I 4  
 Kuhnt-Junius degeneration  
 Senile macular degeneration:  
 disciform  
 wet
- 362.53 Cystoid macular degeneration  
 Cystoid macular edema
- 362.54 Macular cyst, hole, or pseudohole
- 362.55 Toxic maculopathy  
 Use additional E to identify drug, if drug induced
- 362.56 Macular puckering  
 Preretinal fibrosis
- 362.57 Drusen (degenerative)
- 5<sup>th</sup> 362.6 Peripheral retinal degenerations  
**Excludes** hereditary retinal degeneration [dystrophy] (362.70-362.77)  
 retinal degeneration with retinal defect (361.00-361.07)
- 362.60 Peripheral retinal degeneration, unspecified
- 362.61 Paving stone degeneration
- 362.62 Microcystoid degeneration  
 Blessig's cysts  
 Iwanoff's cysts
- 362.63 Lattice degeneration  
 Palisade degeneration of retina
- 362.64 Senile reticular degeneration
- 362.65 Secondary pigmentary degeneration  
 Pseudoretinitis pigmentosa
- 362.66 Secondary vitreoretinal degeneration
- 5<sup>th</sup> 362.7 Hereditary retinal dystrophies
- 362.70 Hereditary retinal dystrophy, unspecified
- 362.71 Retinal dystrophy in systemic or cerebroretinal lipidoses  
 Code first underlying disease, as:  
 cerebroretinal lipidoses (330.1)  
 systemic lipidoses (272.7)
- 362.72 Retinal dystrophy in other systemic disorders and syndromes  
 Code first underlying disease, as:  
 Bassen-Kornzweig syndrome (272.5)  
 Refsum's disease (356.3)
- 362.73 Vitreoretinal dystrophies  
 Juvenile retinoschisis
- 362.74 Pigmentary retinal dystrophy  
 Retinal dystrophy, albinopunctate  
 Retinitis pigmentosa
- 362.75 Other dystrophies primarily involving the sensory retina  
 Progressive cone (-rod) dystrophy  
 Stargardt's disease
- 362.76 Dystrophies primarily involving the retinal pigment epithelium  
 Fundus flavimaculatus  
 Vitelliform dystrophy
- 362.77 Dystrophies primarily involving Bruch's membrane  
 Dystrophy:  
 hyaline  
 pseudoinflammatory foveal  
 Hereditary drusen
- 5<sup>th</sup> 362.8 Other retinal disorders  
**Excludes** chorioretinal inflammations (363.0-363.2)  
 chorioretinal scars (363.30-363.35)
- 362.81 Retinal hemorrhage  
 Hemorrhage:  
 preretinal  
 retinal (deep) (superficial)  
 subretinal
- 362.82 Retinal exudates and deposits
- 362.83 Retinal edema  
 Retinal:  
 cotton wool spots  
 edema (localized) (macular) (peripheral)
- 362.84 Retinal ischemia
- 362.85 Retinal nerve fiber bundle defects
- 362.89 Other retinal disorders
- 362.9 Unspecified retinal disorder
- 4<sup>th</sup> 363 Chorioretinal inflammations, scars, and other disorders of choroid
- 5<sup>th</sup> 363.0 Focal chorioretinitis and focal retinochoroiditis  
**Excludes** focal chorioretinitis or retinochoroiditis in:  
 histoplasmosis (115.02, 115.12, 115.92)  
 toxoplasmosis (130.2)  
 congenital infection (771.2)
- 363.00 Focal chorioretinitis, unspecified  
 Focal:  
 choroiditis or chorioretinitis NOS  
 retinitis or retinochoroiditis NOS
- 363.01 Focal choroiditis and chorioretinitis, juxtapapillary
- 363.03 Focal choroiditis and chorioretinitis of other posterior pole
- 363.04 Focal choroiditis and chorioretinitis, peripheral
- 363.05 Focal retinitis and retinochoroiditis, juxtapapillary  
 Neuroretinitis
- 363.06 Focal retinitis and retinochoroiditis, macular or paramacular
- 363.07 Focal retinitis and retinochoroiditis of other posterior pole
- 363.08 Focal retinitis and retinochoroiditis, peripheral
- 5<sup>th</sup> 363.1 Disseminated chorioretinitis and disseminated retinochoroiditis  
**Excludes** disseminated choroiditis or chorioretinitis in secondary syphilis (091.51)  
 neurosyphilitic disseminated retinitis or retinochoroiditis (094.83)  
 retinal (peri)vasculitis (362.18)
- 363.10 Disseminated chorioretinitis, unspecified  
 Disseminated:  
 choroiditis or chorioretinitis NOS  
 retinitis or retinochoroiditis NOS
- 363.11 Disseminated choroiditis and chorioretinitis, posterior pole
- 363.12 Disseminated choroiditis and chorioretinitis, peripheral

- 363.13 **Disseminated choroiditis and chorioretinitis, generalized**  
Code first any underlying disease, as:  
*tuberculosis (017.3)*
- 363.14 **Disseminated retinitis and retinochoroiditis, metastatic**
- 363.15 **Disseminated retinitis and retinochoroiditis, pigment epitheliopathy**  
Acute posterior multifocal placoid pigment epitheliopathy
- 5<sup>th</sup> 363.2 **Other and unspecified forms of chorioretinitis and retinochoroiditis**  
**Excludes** *panophthalmitis (360.02)*  
*sympathetic uveitis (360.11)*  
*uveitis NOS (364.3)*
- 363.20 **Chorioretinitis, unspecified**  
Choroiditis NOS  
Retinitis NOS  
Uveitis, posterior NOS
- 363.21 **Pars planitis**  
Posterior cyclitis
- 363.22 **Harada's disease**
- 5<sup>th</sup> 363.3 **Chorioretinal scars**  
Scar (postinflammatory) (postsurgical) (posttraumatic):  
choroid  
retina
- 363.30 **Chorioretinal scar, unspecified**
- 363.31 **Solar retinopathy**
- 363.32 **Other macular scars**
- 363.33 **Other scars of posterior pole**
- 363.34 **Peripheral scars**
- 363.35 **Disseminated scars**
- 5<sup>th</sup> 363.4 **Choroidal degenerations**
- 363.40 **Choroidal degeneration, unspecified**  
Choroidal sclerosis NOS
- 363.41 **Senile atrophy of choroid**
- 363.42 **Diffuse secondary atrophy of choroid**
- 363.43 **Angioid streaks of choroid**
- 5<sup>th</sup> 363.5 **Hereditary choroidal dystrophies**  
Hereditary choroidal atrophy:  
partial [choriocapillaris]  
total [all vessels]
- 363.50 **Hereditary choroidal dystrophy or atrophy, unspecified**
- 363.51 **Circumpapillary dystrophy of choroid, partial**
- 363.52 **Circumpapillary dystrophy of choroid, total**  
Helicoid dystrophy of choroid
- 363.53 **Central dystrophy of choroid, partial**  
Dystrophy, choroidal:  
central areolar  
circinate
- 363.54 **Central choroidal atrophy, total**  
Dystrophy, choroidal:  
central gyrate  
serpiginous
- 363.55 **Choroideremia**
- 363.56 **Other diffuse or generalized dystrophy, partial**  
Diffuse choroidal sclerosis
- 363.57 **Other diffuse or generalized dystrophy, total**  
Generalized gyrate atrophy, choroid
- 5<sup>th</sup> 363.6 **Choroidal hemorrhage and rupture**
- 363.61 **Choroidal hemorrhage, unspecified**
- 363.62 **Expulsive choroidal hemorrhage**
- 363.63 **Choroidal rupture**

- 5<sup>th</sup> 363.7 **Choroidal detachment**
- 363.70 **Choroidal detachment, unspecified**
- 363.71 **Serous choroidal detachment**
- 363.72 **Hemorrhagic choroidal detachment**
- 363.8 **Other disorders of choroid**
- 363.9 **Unspecified disorder of choroid**
- 4<sup>th</sup> 364 **Disorders of iris and ciliary body**
- 5<sup>th</sup> 364.0 **Acute and subacute iridocyclitis**  
Anterior uveitis, acute, subacute  
Cyclitis, acute, subacute  
Iridocyclitis, acute, subacute  
Iritis, acute, subacute  
**Excludes** *gonococcal (098.41)*  
*herpes simplex (054.44)*  
*herpes zoster (053.22)*
- 364.00 **Acute and subacute iridocyclitis, unspecified**
- 364.01 **Primary iridocyclitis**
- 364.02 **Recurrent iridocyclitis**
- 364.03 **Secondary iridocyclitis, infectious**
- 364.04 **Secondary iridocyclitis, noninfectious**  
Aqueous:  
cells  
fibrin  
flare
- 364.05 **Hypopyon**
- 5<sup>th</sup> 364.1 **Chronic iridocyclitis**  
**Excludes** *posterior cyclitis (363.21)*
- 364.10 **Chronic iridocyclitis, unspecified**
- 364.11 **Chronic iridocyclitis in diseases classified elsewhere**  
Code first underlying disease, as:  
*sarcoidosis (135)*  
*tuberculosis (017.3)*  
**Excludes** *syphilitic iridocyclitis (091.52)*
- 5<sup>th</sup> 364.2 **Certain types of iridocyclitis**  
**Excludes** *posterior cyclitis (363.21)*  
*sympathetic uveitis (360.11)*
- 364.21 **Fuchs' heterochromic cyclitis**
- 364.22 **Glaucomatocyclitic crises**
- 364.23 **Lens-induced iridocyclitis**
- 364.24 **Vogt-Koyanagi syndrome**
- 364.3 **Unspecified iridocyclitis**  
Uveitis NOS
- 5<sup>th</sup> 364.4 **Vascular disorders of iris and ciliary body**
- 364.41 **Hyphema**  
Hemorrhage of iris or ciliary body
- 364.42 **Rubeosis iridis**  
Neovascularization of iris or ciliary body
- 5<sup>th</sup> 364.5 **Degenerations of iris and ciliary body**
- 364.51 **Essential or progressive iris atrophy**
- 364.52 **Iridoschisis**
- 364.53 **Pigmentary iris degeneration**  
Acquired heterochromia of iris  
Pigment dispersion syndrome of iris  
Translucency of iris
- 364.54 **Degeneration of pupillary margin**  
Atrophy of sphincter of iris  
Ectropion of pigment epithelium of iris
- 364.55 **Miotic cysts of pupillary margin**
- 364.56 **Degenerative changes of chamber angle**
- 364.57 **Degenerative changes of ciliary body**
- 364.59 **Other iris atrophy**  
Iris atrophy (generalized) (sector shaped)

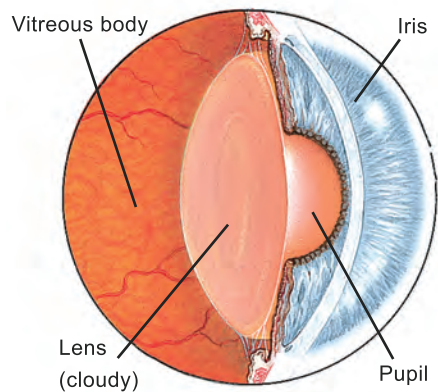
- 5<sup>th</sup> 364.6 Cysts of iris, ciliary body, and anterior chamber**  
**Excludes** *miotic pupillary cyst (364.55)*  
*parasitic cyst (360.13)*  
**364.60 Idiopathic cysts**  
**364.61 Implantation cysts**  
 Epithelial down-growth, anterior chamber  
 Implantation cysts (surgical) (traumatic)  
**364.62 Exudative cysts of iris or anterior chamber**  
**364.63 Primary cyst of pars plana**  
**364.64 Exudative cyst of pars plana**
- 5<sup>th</sup> 364.7 Adhesions and disruptions of iris and ciliary body**  
**Excludes** *flat anterior chamber (360.34)*  
**364.70 Adhesions of iris, unspecified**  
 Synechiae (iris) NOS  
**364.71 Posterior synechiae**  
**364.72 Anterior synechiae**  
**364.73 Goniosynechiae**  
 Peripheral anterior synechiae  
**364.74 Pupillary membranes**  
 Iris bombé  
 Pupillary:  
 occlusion  
 seclusion  
**364.75 Pupillary abnormalities**  
 Deformed pupil  
 Ectopic pupil  
 Rupture of sphincter, pupil  
**364.76 Iridodialysis**  
**364.77 Recession of chamber angle**
- 364.8 Other disorders of iris and ciliary body**  
**364.81 Floppy iris syndrome**  
 Intraoperative floppy iris syndrome (IFIS)  
 Use additional E code to identify cause, such as:  
 sympatholytics [antiadrenergics] causing adverse  
 effect in therapeutic use (E941.3)  
 ● **364.52 Plateau iris syndrome**  
**364.89 Iridodialysis**  
**Excludes** *prolapse of iris in recent wound (871.1)*  
**364.9 Unspecified disorder of iris and ciliary body**
- 4<sup>th</sup> 365 Glaucoma**  
**Excludes** *blind hypertensive eye [absolute glaucoma] (360.42)*  
*congenital glaucoma (743.20-743.22)*
- 5<sup>th</sup> 365.0 Borderline glaucoma [glaucoma suspect]**  
**365.00 Preglaucoma, unspecified**  
**365.01 Open angle with borderline findings 1 2**  
 Open angle with:  
 borderline intraocular pressure  
 cupping of optic discs  
**365.02 Anatomical narrow angle**  
**365.03 Steroid responders**  
**365.04 Ocular hypertension**
- 5<sup>th</sup> 365.1 Open-angle glaucoma**  
**365.10 Open-angle glaucoma, unspecified 1 2**  
 Wide-angle glaucoma NOS  
**365.11 Primary open angle glaucoma 1 2**  
 Chronic simple glaucoma  
**365.12 Low tension glaucoma 1 2**  
**365.13 Pigmentary glaucoma**  
**365.14 Glaucoma of childhood**  
 Infantile or juvenile glaucoma  
**365.15 Residual stage of open angle glaucoma 1 2**
- 5<sup>th</sup> 365.2 Primary angle-closure glaucoma**  
**365.20 Primary angle-closure glaucoma, unspecified**  
**365.21 Intermittent angle-closure glaucoma**  
 Angle-closure glaucoma:  
 interval  
 subacute  
**365.22 Acute angle-closure glaucoma**  
**365.23 Chronic angle-closure glaucoma**  
**365.24 Residual stage of angle-closure glaucoma**
- 5<sup>th</sup> 365.3 Corticosteroid-induced glaucoma**  
**365.31 Glaucomatous stage**  
**365.32 Residual stage**
- 5<sup>th</sup> 365.4 Glaucoma associated with congenital anomalies, dystrophies, and systemic syndromes**  
**365.41 Glaucoma associated with chamber angle anomalies**  
 Code first associated disorder, as:  
*Axenveld's anomaly (743.44)*  
*Rieger's anomaly or syndrome (743.44)*  
**365.42 Glaucoma associated with anomalies of iris**  
 Code first associated disorder, as:  
*aniridia (743.45)*  
*essential iris atrophy (364.51)*  
**365.43 Glaucoma associated with other anterior segment anomalies**  
 Code first associated disorder, as:  
*microcornea (743.41)*  
**365.44 Glaucoma associated with systemic syndromes**  
 Code first associated disease, as:  
*neurofibromatosis (237.7)*  
*Sturge-Weber (-Dimitri) syndrome (759.6)*
- 5<sup>th</sup> 365.5 Glaucoma associated with disorders of the lens**  
**365.51 Phacolytic glaucoma**  
 Use additional code for associated hypermature  
 cataract (366.18)  
**365.52 Pseudoexfoliation glaucoma**  
 Use additional code for associated pseudoexfoliation  
 of capsule (366.11)  
**365.59 Glaucoma associated with other lens disorders**  
 Use additional code for associated disorder, as:  
 dislocation of lens (379.33-379.34)  
 spherophakia (743.36)
- 5<sup>th</sup> 365.6 Glaucoma associated with other ocular disorders**  
**365.60 Glaucoma associated with unspecified ocular disorder**  
**365.61 Glaucoma associated with pupillary block**  
 Use additional code for associated disorder, as:  
 seclusion of pupil [iris bombé] (364.74)  
**365.62 Glaucoma associated with ocular inflammations**  
 Use additional code for associated disorder, as:  
 glaucomatocyclitic crises (364.22)  
 iridocyclitis (364.0-364.3)  
**365.63 Glaucoma associated with vascular disorders**  
 Use additional code for associated disorder, as:  
 central retinal vein occlusion (362.35)  
 hyphema (364.41)  
**365.64 Glaucoma associated with tumors or cysts**  
 Use additional code for associated disorder, as:  
 benign neoplasm (224.0-224.9)  
 epithelial down-growth (364.61)  
 malignant neoplasm (190.0-190.9)  
**365.65 Glaucoma associated with ocular trauma**  
 Use additional code for associated condition, as:  
 contusion of globe (921.3)  
 recession of chamber angle (364.77)

- 5<sup>th</sup> 365.8 Other specified forms of glaucoma
- 365.81 Hypersecretion glaucoma
  - 365.82 Glaucoma with increased episcleral venous pressure
  - 365.83 Aqueous misdirection  
Malignant glaucoma
  - 365.89 Other specified glaucoma
- 365.9 Unspecified glaucoma

4<sup>th</sup> 366 Cataract

**Excludes** congenital cataract (743.30-743.34)

## Cataract



- 5<sup>th</sup> 366.0 Infantile, juvenile, and presenile cataract
- 366.00 Nonsenile cataract, unspecified
  - 366.01 Anterior subcapsular polar cataract
  - 366.02 Posterior subcapsular polar cataract
  - 366.03 Cortical, lamellar, or zonular cataract
  - 366.04 Nuclear cataract
  - 366.09 Other and combined forms of nonsenile cataract
- 5<sup>th</sup> 366.1 Senile cataract
- 366.10 Senile cataract, unspecified **A**
  - 366.11 Pseudoexfoliation of lens capsule **A**
  - 366.12 Incipient cataract **A**
    - Cataract:
      - coronary
      - immature NOS
      - punctate
      - Water clefts
  - 366.13 Anterior subcapsular polar senile cataract **A**
  - 366.14 Posterior subcapsular polar senile cataract **A**
  - 366.15 Cortical senile cataract **A**
  - 366.16 Nuclear sclerosis **A**
    - Cataracta brunescens
    - Nuclear cataract
  - 366.17 Total or mature cataract **A**
  - 366.18 Hypermature cataract **A**
    - Morgagni cataract
  - 366.19 Other and combined forms of senile cataract **A**
- 5<sup>th</sup> 366.2 Traumatic cataract
- 366.20 Traumatic cataract, unspecified
  - 366.21 Localized traumatic opacities  
Vossius' ring
  - 366.22 Total traumatic cataract
  - 366.23 Partially resolved traumatic cataract
- 5<sup>th</sup> 366.3 Cataract secondary to ocular disorders
- 366.30 Cataracta complicata, unspecified

- 366.31 Glaucomatous flecks (subcapsular)  
Code first underlying glaucoma (365.0-365.9)
- 366.32 Cataract in inflammatory disorders  
Code first underlying condition, as:  
chronic choroiditis (363.0-363.2)
- 366.33 Cataract with neovascularization  
Code first underlying condition, as:  
chronic iridocyclitis (364.10)
- 366.34 Cataract in degenerative disorders  
Sunflower cataract  
Code first underlying condition, as:  
chalcosis (360.24)  
degenerative myopia (360.21)  
pigmentary retinal dystrophy (362.74)

5<sup>th</sup> 366.4 Cataract associated with other disorders

- 366.41 Diabetic cataract **I I 7**  
Code first diabetes (250.5)
- 366.42 Tetanic cataract  
Code first underlying disease as:  
calcinosis (275.40)  
hypoparathyroidism (252.1)
- 366.43 Myotonic cataract  
Code first underlying disorder (359.21-359.29)
- 366.44 Cataract associated with other syndromes  
Code first underlying condition, as:  
craniofacial dysostosis (756.0)  
galactosemia (271.1)
- 366.45 Toxic cataract  
Drug-induced cataract  
Use additional E to identify drug or other toxic substance
- 366.46 Cataract associated with radiation and other physical influences  
Use additional E to identify cause

5<sup>th</sup> 366.5 After-cataract

- 366.50 After-cataract, unspecified  
Secondary cataract NOS
- 366.51 Soemmering's ring
- 366.52 Other after-cataract, not obscuring vision
- 366.53 After-cataract, obscuring vision

## 366.8 Other cataract

Calcification of lens

## 366.9 Unspecified cataract

4<sup>th</sup> 367 Disorders of refraction and accommodation

- 367.0 Hypermetropia  
Far-sightedness  
Hyperopia
- 367.1 Myopia  
Near-sightedness
- 5<sup>th</sup> 367.2 Astigmatism
  - 367.20 Astigmatism, unspecified
  - 367.21 Regular astigmatism
  - 367.22 Irregular astigmatism
- 5<sup>th</sup> 367.3 Anisometropia and aniseikonia
  - 367.31 Anisometropia
  - 367.32 Aniseikonia
- 367.4 Presbyopia
- 5<sup>th</sup> 367.5 Disorders of accommodation
  - 367.51 Paresis of accommodation  
Cycloplegia
  - 367.52 Total or complete internal ophthalmoplegia
  - 367.53 Spasm of accommodation