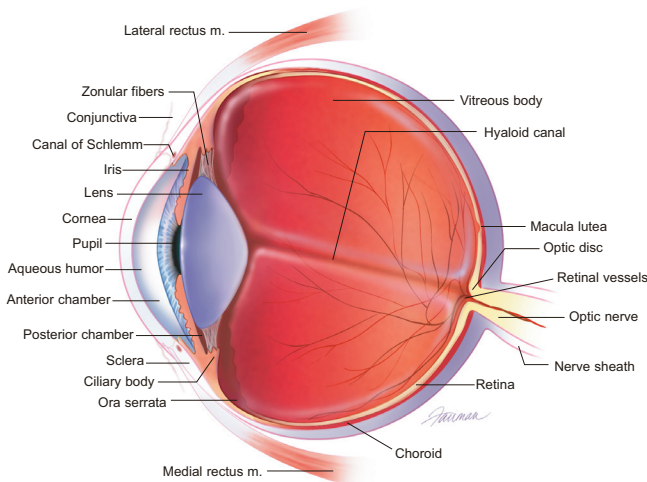


# Cataract Surgery



## Extraction of Cataract

### Coding Guidance

The introduction of a needle or catheter for diagnostic/therapeutic services related to cataract removal would not be coded separately. Also, the injection of diagnostic/therapeutic substances (e.g., anesthetics, medication, steroids,) into the spine, extracranial skin, nerves, or/and eye as part of the cataract surgery and follow-up care would not be coded separately. Many incision and excision procedures on the eye (e.g., astigmatism surgery, canthotomy, iridotomy, iridectomy, capsulotomy – anterior and posterior) would be part of a global cataract removal surgery or subject to the multiple surgery modifier 51.

**66830 Removal of secondary membranous cataract (opacified posterior lens capsule and/or anterior hyaloid) with corneo-scleral section, with or without iridectomy (iridocapsulotomy, iridocapsulectomy)** 4

RVU		Global Days	Modifiers			
Non-Fac Total	Fac Total		51	50	80	62
16.51	16.51	90	y	y	n	n

Pub 100-02, 15, 260.2; 100-03, 1, 80.10-80.12; 100-04, 14, 10.3-10.4

**66840 Removal of lens material; aspiration technique, one or more stages** 4

RVU		Global Days	Modifiers			
Non-Fac Total	Fac Total		51	50	80	62
16.16	16.16	90	y	y	n	n

AMA: Sept. 1992

Pub 100-02, 15, 260.2; 100-03, 1, 80.10-80.12; 100-04, 14, 10.3-10.4

**66850 Removal of lens material; phacofragmentation technique (mechanical or ultrasonic) (eg, phacoemulsification), with aspiration** 7

RVU		Global Days	Modifiers			
Non-Fac Total	Fac Total		51	50	80	62
18.35	18.35	90	y	y	n	n

AMA: Fall 1992

Pub 100-02, 15, 260.2; 100-03, 1, 80.10-80.12; 100-04, 14, 10.3-10.4

**66852 Removal of lens material; pars plana approach, with or without vitrectomy** 4

RVU		Global Days	Modifiers			
Non-Fac Total	Fac Total		51	50	80	62
19.68	19.68	90	y	y	d	d

AMA: Fall 1992

Pub 100-02, 15, 260.2; 100-03, 1, 80.10-80.12; 100-04, 14, 10.3-10.4

**66920 Removal of lens material; intracapsular** 4

RVU		Global Days	Modifiers			
Non-Fac Total	Fac Total		51	50	80	62
17.58	17.58	90	y	y	d	d

AMA: Fall 1992

Pub 100-02, 15, 260.2; 100-03, 1, 80.10-80.12; 100-04, 14, 10.3-10.4

**66930 Removal of lens material; intracapsular, for dislocated lens** 5

RVU		Global Days	Modifiers			
Non-Fac Total	Fac Total		51	50	80	62
19.93	19.93	90	y	y	d	n

AMA: Fall 1992

Pub 100-02, 15, 260.2; 100-03, 1, 80.10-80.12; 100-04, 14, 10.3-10.4

**66940 Removal of lens material; extracapsular (other than 66840, 66850, 66852)** 5

RVU		Global Days	Modifiers			
Non-Fac Total	Fac Total		51	50	80	62
18.11	18.11	90	y	y	d	d

AMA: Fall 1992

Pub 100-02, 15, 260.2; 100-03, 1, 80.10-80.12; 100-04, 14, 10.3-10.4

**66982 Extracapsular cataract removal with insertion of intraocular lens prosthesis (one stage procedure) manual or mechanical technique (eg, irrigation and aspiration or phacoemulsification) complex requiring devices or techniques not generally used in routine cataract surgery (eg, iris expansion device suture support for intraocular lens or primary posterior capsulorrhexis) or performed on patients in the amblyogenic developmental stage** 8

See code 76519 for lens power calculation.

See code 99070 or Q1003-Q1005, V2630-V2799 to report supply of an intraocular lens.

RVU		Global Days	Modifiers			
Non-Fac Total	Fac Total		51	50	80	62
25.21	25.21	90	y	y	n	n

AMA: Feb 2001, Nov 2003

Pub 100-02, 15, 260.2; 100-03, 1, 80.10-80.12; 100-04, 14, 10.3-10.4

**66983 Intracapsular cataract extraction with insertion of intraocular lens prosthesis (one stage procedure)** 8

See code 76519 for lens power calculation.

See code 99070 or codes Q1003-Q1005, V2630-V2799 to report supply of an intraocular lens.

RVU		Global Days	Modifiers			
Non-Fac Total	Fac Total		51	50	80	62
16.52	16.52	90	y	y	n	n

AMA: Fall 1992, Nov 2003

66830–66983